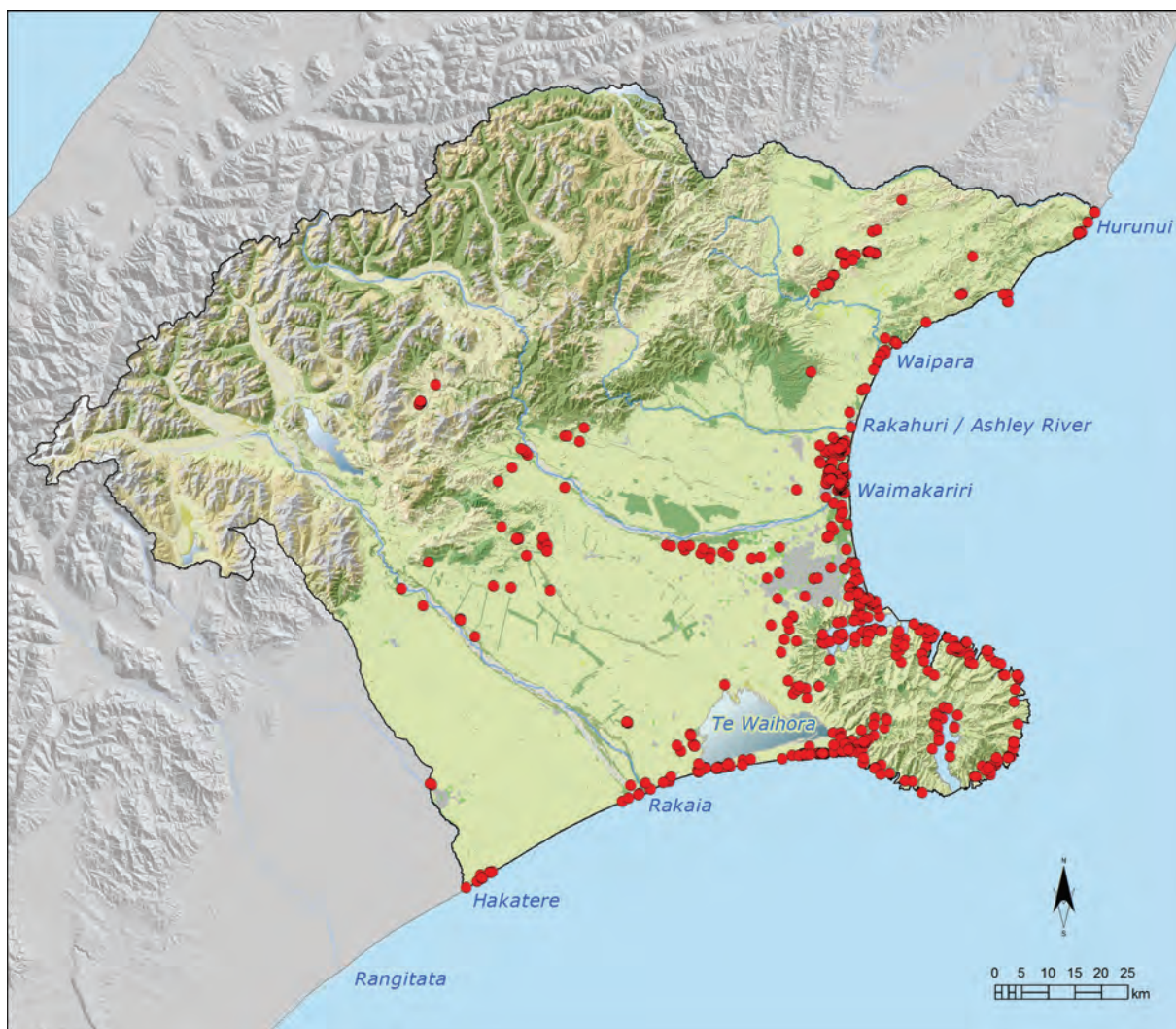


## Appendix 2: New Zealand Archaeological Association (NZAA) sites from the Hurunui to the Hakatere



**Note:** This map shows Māori archaeological sites that are recorded in the NZAA database, from the Hurunui to the Hakatere. The purpose of the map is to show distribution and intensity of sites, rather than precise location. It is important to note that there are numerous Māori archaeological sites that are not publicly recorded, and that there are sites and features of cultural significance to Ngāi Tahu whānui that may not meet the Crown's definition of an archaeological site under the Historic Places Act 1993. Further, NZAA sites are often indicators of the existence of other sites that have not been recorded or identified.